

Sharing Experiences and Forming Networks - Tana River Delta

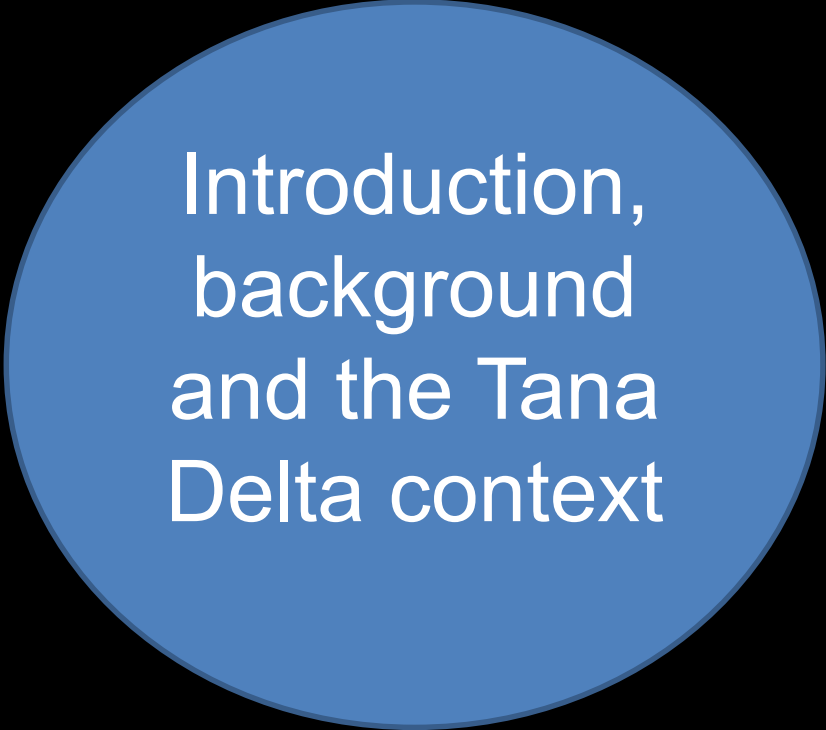
Serah Munguti serah.munguti@fauna-flora.org

Paul Matiku matiku@naturekenya.org

Funded by the UK Government
through the Darwin Initiative



Part 1



Introduction,
background
and the Tana
Delta context

About Nature Kenya the East Africa Natural History Society (EANHS)

- Africa's oldest environmental Society
- Established in 1909 to promote the study and conservation of nature in eastern Africa
- Over 1000 individual & 35 corporate members
- Democratically governed
- 43 staff



NatureKenya
THE EAST AFRICA NATURAL HISTORY SOCIETY

Nature Kenya's Strategic Objectives

1 Save species



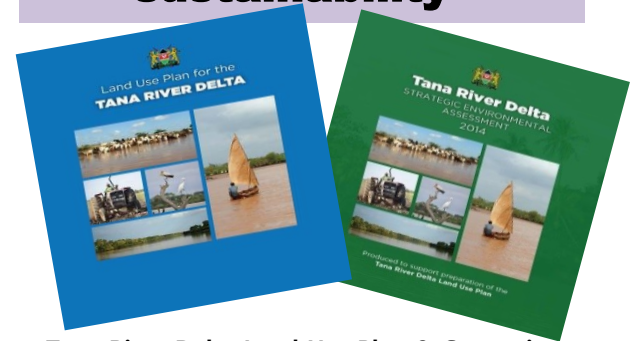
Critically Endangered Taita Apalis

2 Conserve sites and habitats



Dakatcha Woodland, Kilifi

3 Encourage Ecological sustainability



Tana River Delta Land Use Plan & Strategic Environmental Assessment



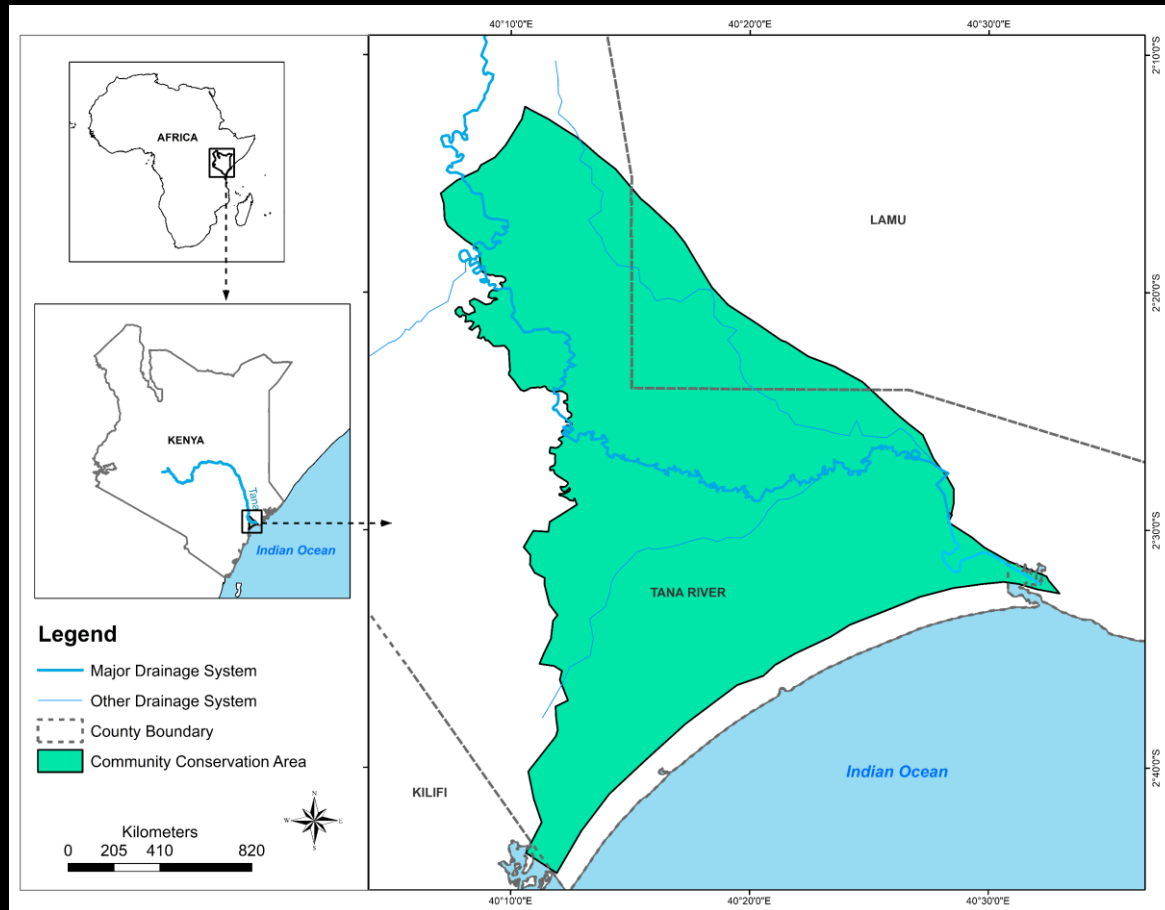
A Beekeeper in Nandi Hills Forest

4

Context and Key Highlights

- Tana River Delta
- Conservation of large wetlands in the context of multiple land use planning and preservation of ecosystem services
- Multi-agency partnerships and collaboration
- Community driven approaches including resolution of resource conflicts
- Timeline: 2007 – 2020
- Ongoing support through Darwin Project 24-013 *Balancing water services for development and biodiversity in the Tana-Delta* (April 2017 – March 2021)

Tana Delta location



Tana Delta is an Important Bird Area (IBA)



Tana Delta is a Key Biodiversity Area (KBA)



Tana Delta supports livelihoods for 120,000
local people



Photo by Cheryl-Samantha Owen



Tana River Delta is a Ramsar site

Tana River Delta - overview

- Kenya's largest wetland
- 130,000 ha
- Second most important deltaic ecosystem in Eastern Africa
- Forms the northern limit of the Eastern Arc Mountains and Coastal Forests biodiversity hotspot
- A proposed World Heritage Site
- 120,000 people call Tana Delta home – farmers, pastoralists, fishermen, minority groups



Pastoralist (Orma) village

Issues affecting Tana Delta





- High poverty levels - 77%
- Low literacy levels – 33%
- Logging of forests, slash and burn agriculture.
- Community institutions – lack capacity to engage in NRM
- Overgrazing – fall back drought grazing refuge

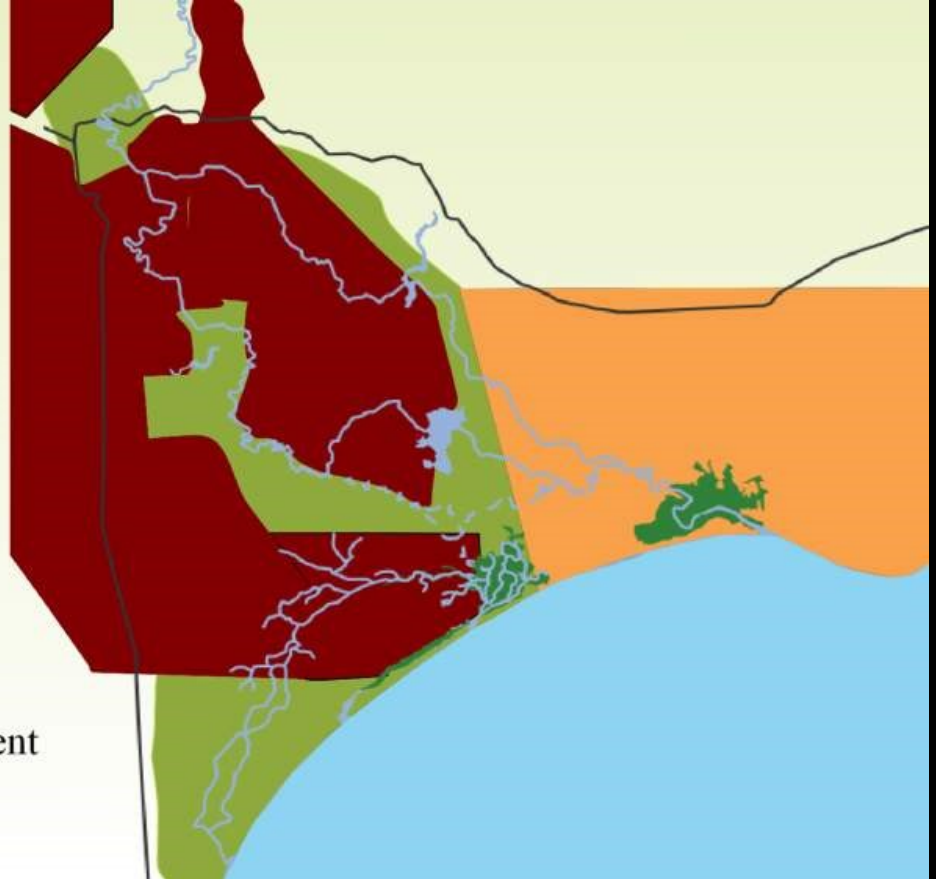


Photo by Cheryl-Samantha Owen

Proposed developments in 2007

Tana Delta

-  Tana Delta Important Bird Area
-  Mangrove forest
-  Areas for agricultural development
-  Oil exploration area



In 2007...



Photo by Cheryl-Samantha Owen

- Livelihoods were threatened
- Biodiversity was threatened
- Tourism was threatened
- Competition between national and local interests
- Escalating violent conflicts between farmers and pastoralists over land and water
- Guided development was needed

Part 2



Responses to the
Tana Delta
Challenges,
Lessons learned
and networks
formed

2011-2015: Award winning Delta-wide Land Use Plan (LUP) based on Strategic Environmental Assessment (SEA)

2007-2011: Local, national and global advocacy campaign
LUP process led by Office of the Prime Minister and brought together

- 18 national govt ministries and agencies
- 106 villages
- 2 county governments
- Civil society
- International experts



Community members in a LUP meeting with Netherlands Commission on Environmental Assessment – D. Mumbu

Learning: Real stakeholder engagement is multipronged and based on trust

- The LUP could not have been delivered without any of the partners
- Lead from behind for real government ownership

In 2016 the Tana Delta LUP and SEA won the Royal Town Planning Institute's International Award for Planning Excellence



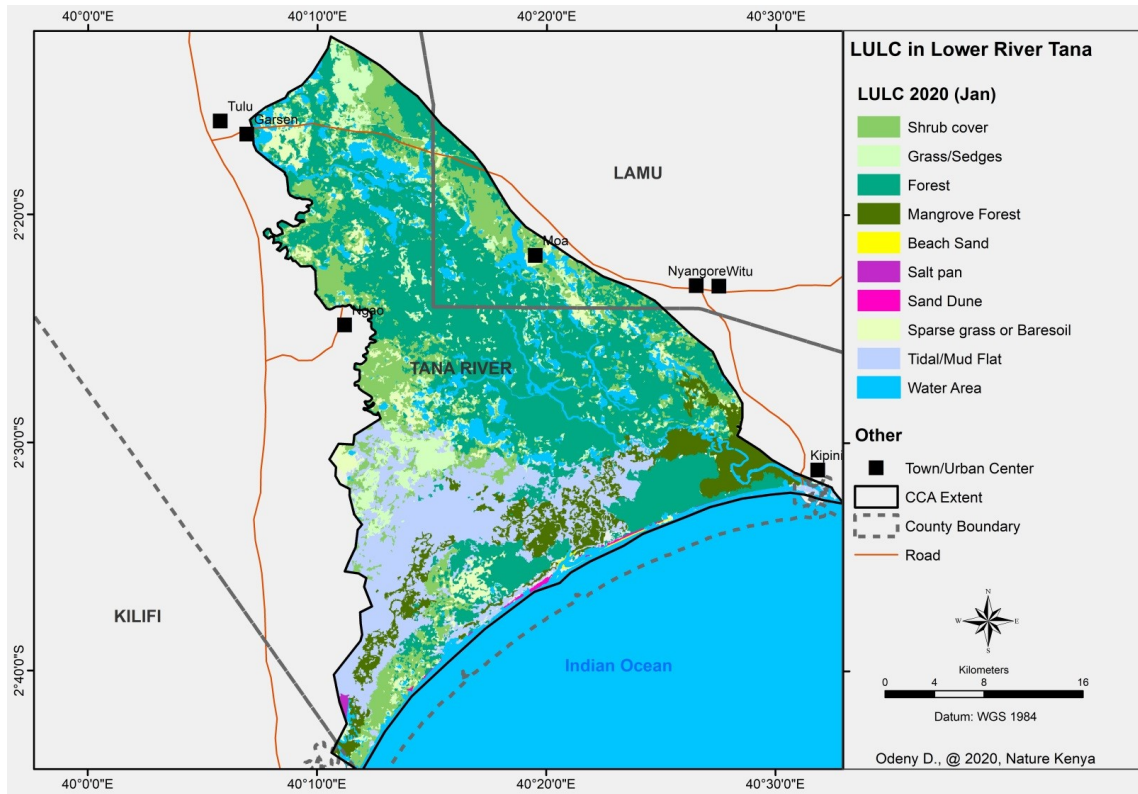


In 2017 Land Use Plan implementation initiated

- 2017-2018: 116,867ha Indigenous and Community Conservation Area (ICCA) established with a governance structure

ICCA ecosystem services
Assessment done

Learning: Community
leadership and ownership
assures sustainability and
legacy of interventions



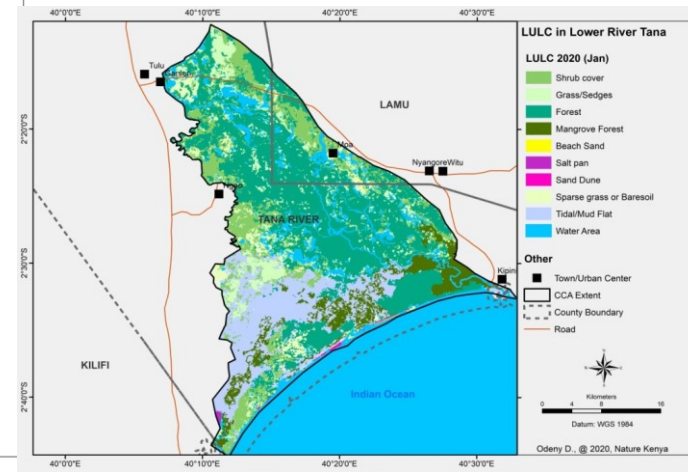
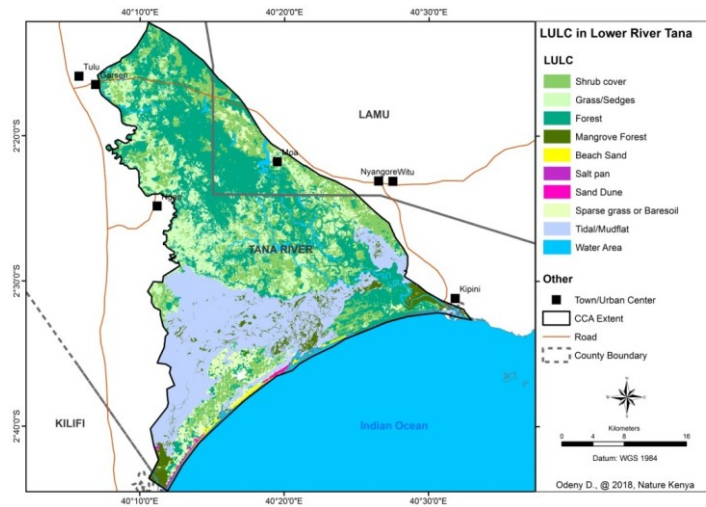
Restoration programs initiated



- Between 2018-2020 forest cover increased by 20%
- 127% increase in mangrove cover

	AREA [Ha.]	
	2018	2020
LULC		
Beach Sand	649	473
Cloud Cover	113	0
Forest	44,813	45,592
Grass/Sedges	17,740	13,449
Mangrove Forest	3,939	7,937
Salt pan	59	99
Sand Dune	276	284
Shrub cover	21,980	18,590
Sparse grass or Baresoil	5,970	4,979
Tidal/Mudflat	19,153	17,479
Water Area	2176	7987
Total Area	116868	116868

Learning:
Empowered
communities
become green
champions



Sustainable livelihoods promoted



Learning: In areas
with high poverty
Livelihoods and
conservation go
hand in hand

Train the trainer



- Fast maturing high value crops promoted
- Links with private sector established

Community resilience to effects of climate change enhanced

Learning: Collaborative and adaptive management is an enabler for community and govt engagement



- 91 Rice farmers in Ozi Village produced 59 tons of rice on land previously abandoned due to sea water intrusion

Community livelihoods...

Learning:
Innovation and
diversification of
livelihoods
ensured no one
was left behind,
and in promoted
gender integration



180 Galla Bucks to improve local breeds



Honey and poultry enterprise supported

Value addition and community enterprise



Learning: combination of livelihoods support and nature based enterprise development is a catalyst for local support for conservation

- Community nature based enterprise center for value addition and marketing

The Green Industrial Park

TANA RIVER DELTA

BUSINESS CASE
and
Investment Rationale

FOR THE
GREEN HEART PROJECT



Working Draft



Transforming lives, spurring economic growth, keeping nature values in the Tana Delta

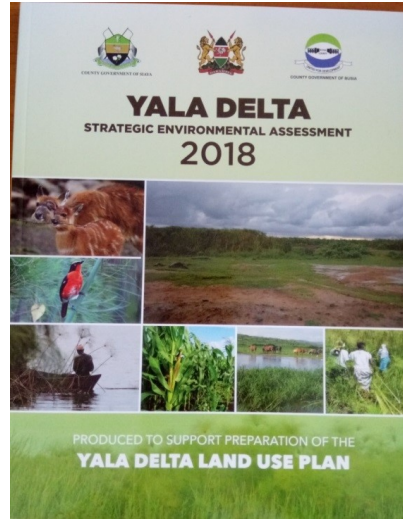
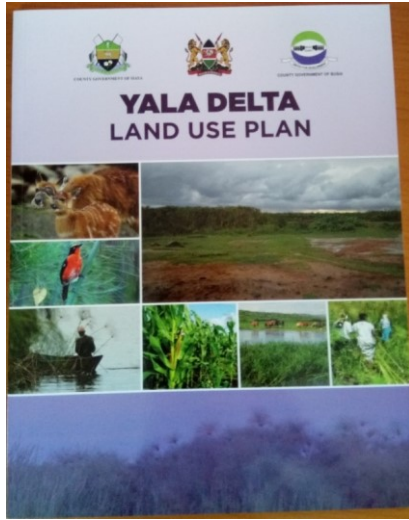
Products being prepared:

- Road Map for the GIP
- Investment Rationale for the GIP
- Prospectus for the GIP
- Manual for the GIP

Learning: Community agenda can drive wider government and investor engagement



Land Use Plan and SEA successfully replicated in Yala Swamp – Kenya's second largest delta



1000 copies of LUP and SEA published endorsed by 66 villages,
2 county governments, national government agencies and H.E.
The Rt. Hon. Raila Odinga – Former PM

**Learning: The Tana LUP SEA model is a
replicable model for management of land use
and resolution of resource conflicts**



Thank you



Department
for Environment
Food & Rural Affairs

